



Sigma Alpha Alumni News

Alpha Chapter, The Ohio State University

<http://sigmaalphabuckeyealumni.20m.com>

"Promoting women in agriculture and strengthening the bonds of friendship among them"

Volume No. 3

Issue No. 2

June 2004

❧ ❧ Founder's Day 2004 Minutes ❧ ❧

The February 24, 2004, business meeting of the Sigma Alpha Ohio State Alumni was called to order by Jenell Jensen, Board President, in the Agricultural Administration Building at the Ohio State University. Six members and one active chapter advisor were present.

Officer's Reports

President

National Convention Update

- See newsletter for article that Jenell wrote
- Sarah Jane also gave a brief report
- New alcohol and substance use policy for Alumni was discussed (enclosed in packet)
- Had a great time, and thanked the Alumni for helping to pay expenses
- This year's convention will be held in Buffalo, October 14 -16, 2004

Active Chapter Issues

- The Alumni purchased a Sigma Alpha felt banner as a gift to the Active Chapter.

Secretary

Erin moved, and Becky seconded to accept minutes as printed from the last board meeting on September. Christina will work with Jenell to get the membership list updated.

Vice President

Elizabeth gave a newsletter update. It costs about \$50.00 to send to just paid members, and about \$100.00 to everybody. The next newsletter will go out the first week of April, so the deadline for submissions will be March 24. In April it will be mailed out to every Alumni member.

(Continued on Page 2)



Upcoming Events



August 7, 2004

Columbus Zoo Trip

Meet inside the front gate at 10:00 AM. Everyone's welcome!

October 1, 2004

Promising Young Women

This year the theme will be International Agriculture. Sponsors and Speakers are needed. Please contact Erin McKinniss at mckinniss.11@osu.edu.

October 23, 2004

Homecoming Football Tailgate Party

For Alumni Only!! We will have a tailgate party during the Homecoming Football game at Becky Reed's parents RV in the OSU Baseball Field. More details to come!

Ideas for social events and other activities are needed!! If anyone has any ideas/suggestions, please email your thoughts to any of the Alumni Board Officers.

❧ ❧ Founder's Day 2004 Minutes (Continued) ❧ ❧

Treasurer

Erin moved, and Becky seconded to accept the Treasurer's report as printed from the last board meeting on September.

As of September 15, 2003:

| | |
|---|--|
| Checking Account Balance- | \$4341.05 |
| Operating Money within Checking | \$2178.03 |
| Outstanding bills Newsletter printing from Elizabeth/ Aug newsletter ???? | |
| Scholarship Fund within Checking | \$2163.02 (down \$365.00 from year-end 2002) |
| House Fund CD (8-27-2003) | \$5561.22 |
| Maturity Date 7-17-2004 | |

Membership Count at present time (Alumni in good standing)

| | |
|--|------------------------|
| Ohio Lifetime Members paid in full. | 25 Alumni |
| Ohio Lifetime memberships being paid on | 16 Alumni |
| Annual membership paid as of 12/31/2002 | 30 Alumni |
| Total membership | 71 Alumni (about 39%) |
| Graduating Senior Members | 7 |
| National Sigma Alpha Lifetime Members | 18 Alumni |
| Annual NSA Members | 5 Alumni |
| Welcome New Ohio Lifetime Members- Carmen Kenney | |

2004 Annual Dues have been set for \$25.00

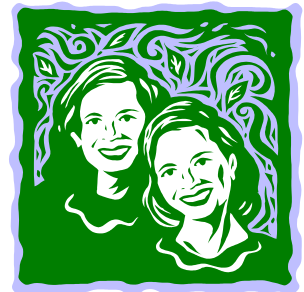
\$15.00 for Association operating Fund

\$10.00 for Scholarship Fund

No House fund dues at this time

\$300.00 in payments of at least \$50.00 each year for six years.

Dues are due to Christy by May 1, if you would like to vote next year at Founder's Day and to be included on the National Alumni list report. If you are interested in paying National Sigma Alpha Alumni Assoc. dues, please contact Nationals directly. National dues are due Sept. 30, 2004.



As of February 22, 2004:

| | |
|----------------------------------|------------|
| Checking Account Balance- | \$3,372.04 |
| Operating Money within Checking | \$1,559.02 |
| Scholarship Fund within Checking | \$1,813.02 |
| House Fund CD (1.24%) | \$5,596.08 |
| Maturity Date 7-17-2004 | |

Membership Count at present time (Alumni in good standing):

(All numbers based on payments as of 12-31-03)

| | |
|---|-----------------------|
| Ohio Lifetime Members paid in full. | 27 Alumni |
| Ohio Lifetime memberships being paid on | 15 Alumni |
| Annual Ohio Members | 33 Alumni |
| Total membership | 75 Alumni (about 40%) |
| Graduating 2004 Senior Members | 7 |
| National Sigma Alpha Lifetime Members | 18 Alumni |
| Annual NSA Members | 5 Alumni |

(Continued on Page 4)

Help Needed!!

The Active Chapter is in dire need of the following items. Please contact Jenell Jensen if you can help!

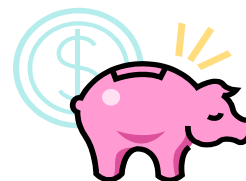
1. **Refrigerator** (good to new condition)
2. **Washer and Dryer** (good to new condition)
3. **Vacuum Cleaner** (new and heavy duty)
4. **Two 12'x12' (or 15') Area Rugs** for the Chapter Room and Basement- preferably dark or multi-colored for better wear
5. **Sofa, Loveseat, Chairs** (good to new condition)
6. **Metal Shelving Units** for storage room (sturdy)



Newsworthy Events and Achievements

New Arrivals

Vicki (Bigler) and Murray Knisley, a boy- Mason- April 2004



Treasurer's Corner

Yes, it is time again to start a new year of collecting dues. Last year, we were able to collect 48% of our alumni dues. Thank you for an outstanding response to your sisterhood bonds!!!! Our 2004 dues will remain the same: \$25.00 for an Annual Ohio Alumni membership and \$50.00 Ohio lifetime. The list below is alumni currently paying their Lifetime Ohio dues. If you have not paid Lifetime dues, that is o.k. Just send in \$50.00 in 2004 and we will sign you up for 6 easy payments of \$50.00 each (total \$300.00). All Lifetime memberships which are paid in full are listed on the website. Also be sure to send any address changes. We want to keep in touch with you. Please send checks to Sigma Alpha Alumni of Ohio Inc., C/o Christy Black-Montoya, 6469 Germantown Pike, Dayton, Ohio 45418.

Sisters Paying on Lifetime Dues:

Kimberly Kellar Arbaugh
Jenell Payne Jensen
Karissa Rhomey Ulmer
Monna Jordon Hess
Lisa Shearer

Sarah Jane Duffy
Elizabeth Carleton Kline
Jenny Walters VanDerLans
Javonne Soos Mullins
Holly Downing Stacy

Christina Friedl Howard
Christy Black Montoya
Lisa Oda Fede
Sherry Arnold Nichles
Sharon Thomas

-Christy Black Montoya

❧ ❧ Founder's Day 2004 Minutes (Continued) ❧ ❧

Welcome New Ohio Lifetime Members Since 9/03: Sharon Thayer Baxter and Wanda High Berk

2004 Annual Dues have been set for \$25.00

\$15.00 for Association operating Fund

\$10.00 for Scholarship Fund

No House fund dues at this time

Lifetime Ohio dues are \$300.00 in payments of at least \$50.00 each year for six years.

Dues are due to Christy by May 1, 2004. This will allow you to vote at next year's Founder's Day and to be included on the National Alumni list report.

If you are interested in paying National Sigma Alpha Alumni Assoc. dues please contact Nationals directly. National dues are due September 30, 2004.

Members at Large/Committee Reports:

Carmen

-It was discussed that maybe we need to reevaluate our finals week gifts. We will sponsor another pizza party for this quarter.

Sarah Jane

-We would like to plan a zoo day again, however make it on a Saturday so more people can attend.

-Becky volunteered her mom's RV for the October Homecoming/football activity. Homecoming is October 23, 2004.

Old Business- None.

New Business

Due to the non-existence of a quorum, the required officer positions of Treasurer and Vice President were appointed by the Board as well as the three optional Member at Large officers.

The following offices/positions were appointed:

| | |
|---|--------------------------|
| Treasurer: Christy (Black) Montoya | -Term February 2004-2006 |
| Vice President: Elizabeth (Carlton) Kline | -Term February 2004-2006 |
| Member at Large | |
| -Sarah Jane Duffy | -Term 2004-2006 |
| -Becky (Quantaince) Reed | -Term 2004-2006 |
| -Erin Brooks | -Term 2004-2005 |

-Next Board meeting will be April 25, at 1:00 for Alumni and 3:00 for Active Officers & Members.

Sarah Jane moved to adjourn the meeting. Seconded by Erin, meeting adjourned.

Purpose of Alumni Chapter:

To serve the Active chapter, and to maintain bonds of friendship among the Alumni.



Respectfully Submitted,

Christina Howard, Ohio State Alumni Secretary
April 25, 2004

Congratulations!!

The Alumi Chapter would like to recognize Anna Leis for her accomplishments. Congratulations on winning the 2004 Pamela Blakeslee Scholarship! Keep up the good work!

We would also like to recognize the 2004 Active Chapter Graduates. Congratulations and best wishes in your future endeavors!

Amy Schuhart
Lindsay Stevenson
Amatha Bentley
Katie Grove
Anita Miller
Terri Specht
Marissa Baker
Jilian Gibson
Nikki Mummah
Cathy Hoile
Andrea Garmyn



Scrapbooks and Cookbooks



The Ohio State Alumni are making available personalized and Sigma Alpha customized scrapbook albums for Sigma Alpha activities and alumni! This special limited time fundraiser is to raise money for the chapter's local scholarship fund. To find more information on the scrapbook, visit our alumni website (address listed on front page of newsletter).

The Active Chapter still has cookbooks available. They are \$10. Please contact the Active Chapter President, Anna Leis, at leis.20@osu.edu or call the house at (614) 294-4794.

Newsletters



We are beginning to compile submissions for the next edition of our newsletter. Please send your ideas, notes, little diddies or pictures to Elizabeth Carleton Kline by email to ekline@rcn.com or via snail mail to 123 Horsepound Road, Carmel, NY 10512.



Sigma Alpha Alumni of Ohio
Elizabeth A. Kline
123 Horsepound Road
Carmel, NY 10512