



# Sigma Alpha Alumni News

Alpha Chapter, The Ohio State University

<http://sigmaalphabuckeyealumni.20m.com>

*“Promoting women in agriculture and strengthening the bonds of friendship among them”*

Volume No. 3

Issue No. 1

February 2004

## ❧ ❧ National Convention 2003 Update ❧ ❧

Greetings from C-town, that’s Columbus, Ohio in the middle of winter. It’s cold, however I’m encouraged by the daylight due to the lengthening of the days now after the Holidays!

My main report this time is the great time that Sarah Jane Duffy & I had at National Convention, the 25<sup>th</sup> anniversary of Sigma Alpha held outside of Chicago.

### Sigma Alpha 25<sup>th</sup> Anniversary National Convention in Lisle, IL

Sarah Jane Duffy & I headed out early Fri am Oct 24 from Columbus, arrived around 3pm, got settled in the great hotel & after this short break went non-stop until returning to Columbus Sunday afternoon.

### National Alumni Association Annual Business Meeting, Friday October 24, 2003

Friday night we attended the annual National Alumni Association business meeting, which was great. We met the Board members, voted on the new & had an opportunity to build on the relationship we started building just a few short years ago when the National Alumni Association was created. There were 3 minor by-law changes that were proposed and passed.

The New National Alumni Association Board members are:

President	Alison Squires
Vice President	Jennifer Buckley
Treasurer	Susan Lindley Perkins
Secretary	Emily Younts Payne

The National Alumni Association has created a separate Statement on Alcohol and Substance Use from the National Sorority’s Statement, which I will be including as an attached document in our annual business meeting materials for those attending on February 29.

Afterwards, Sarah Jane & I spent some time getting to know the National Alumni Board members & then we caught up with a few members of National Board to make sure that we had all of the materials we needed for National Chapter Congress Saturday morning.

*(Continued on Page 2)*



## Founder’s Day- Upcoming Events



**SUNDAY, FEBRUARY 29<sup>TH</sup>- FOUNDER’S DAY.** Come celebrate sisterhood as we hold our annual alumni chapter business meeting from 11:30 PM to 12:30 PM in Room 111 Ag Admin. The Active Chapter Program will follow with lunch at 1:00 PM.

Ideas for social events and other activities are needed!! If anyone has any ideas/suggestions, please email your thoughts to any of the Alumni Board Officers.



*(Continued from Page 1)*

EMERALD: The alumni chapter donated a basket for the National Sigma Alpha Alumni Association's Annual Silent Auction, which was 1 of a record-breaking 32 baskets that raised a total of \$1112 for the outstanding Sigma Alpha scholar awards each year recognized at national convention.

**National Chapter Congress, Saturday October 25, 2003**

National Chapter Congress had an exciting energy to it; it was my first time sitting at the table as the official delegate from our chapter.

The new National Board of Directors are:

President	Stacie Buhr	Vice President	Jamie Foster
Treasurer	Tami Schwarz (1 year term)	Past President	Jennifer Maurer

Directors (similar to members at large)

Tenneil Hirsch, Lorrell Kenney Walter, Lanie Reinhart-Coulter, Kelsey Stansberry, Carrie Vollmer Sanders & Christina Sorg

**Awards Banquet, Saturday evening October 25, 2003**

Many, many awards were given out both by the National Board and the National Alumni Board throughout the entire weekend, most of them at the Founder's Breakfast Saturday morning and at the Awards Banquet Saturday night. There were too many to list here, however some examples were: Emerald chapters, Outstanding Professional Development, Outstanding Public Service, Outstanding Sisterhood, Most Improved GPA & Scholarships of course.

To emphasize, (if you haven't caught on to it by now) our trip & fellowship was awesome.

I believe that participating in National Convention gives great perspective as we get to SEE & HEAR the impact that our hard work and dedication has had as college students, alumni board/chapter members, wives, employees, mothers etc., and most importantly women through the organization and its objectives that we have in common.

\*\*Please feel free to contact me any time at [jenelljensen@hotmail.com](mailto:jenelljensen@hotmail.com) or 614-846-3330 & ask me anything that you may be curious regarding or request any of the annual reports, by-laws, attendee list, awardee lists or anything else from National Convention that I may have & I will gladly send you a copy.

It was clear to me that the National Board and National Alumni Board have a good working relationship as they work very closely together on sorority business while maintaining the necessary "separateness" of the different membership groups they serve.

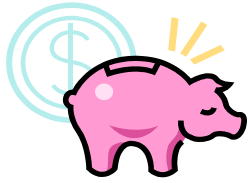
\*\*Let's commit & plan early to have a greater contingent at next year's National Convention which will be held in Buffalo, NY at the Radisson Hotel & Suites October 14-16, 2004 ONLY about a 5 hour drive for those of us in the Columbus Ohio area!! Don't underestimate the genuine power and joy of human interaction; it beats the heck out of email any day.

To reiterate the alumni chapter's purpose on behalf of the Board; we are here to serve the alumni membership through keeping the lines of communication open as well as supporting the Alpha active collegiate chapter.

Thank you for the support of this purpose & please provide input & feedback to any of us as you are led.

-Jenell (Payne) Jensen





## Treasurer's Corner

---

Yes, it is time again to start a new year of collecting dues. Last year, we were able to collect 48% of our alumni dues. Thank you for an outstanding response to your sisterhood bonds!!!! Our 2004 dues will remain the same: \$25.00 for an Annual Ohio Alumni membership and \$50.00 Ohio lifetime. The list below is alumni currently paying their Lifetime Ohio dues. If you have not paid Lifetime dues, that is o.k. Just send in \$50.00 in 2004 and we will sign you up for 6 easy payments of \$50.00 each (total \$300.00). All Lifetime memberships which are paid in full are listed on the website. Also be sure to send any address changes. We want to keep in touch with you. Please send checks to Sigma Alpha Alumni of Ohio Inc., C/o Christy Black-Montoya, 6469 Germantown Pike, Dayton, Ohio 45418.

### Sisters Paying on Lifetime Dues:

Kimberly Kellar Arbaugh  
Jenell Payne Jensen  
Karissa Rhamey Ulmer  
Monna Jordon Hess  
Lisa Shearer

Sarah Jane Duffy  
Elizabeth Carleton Kline  
Jenny Walters VanDerLans  
Javonne Soos Mullins  
Holly Downing Stacy

Christina Friedl Howard  
Christy Black Montoya  
Lisa Oda Fede  
Sherry Arnold Nichles  
Sharon Thomas

Congrats to our Newest Lifetime Member: Wanda High Berk

-Christy Black Montoya

## Scrapbooks

---

The Ohio State Alumni are making available personalized and Sigma Alpha customized scrapbook albums for Sigma Alpha activities and alumni! This special limited time fundraiser is to raise money for the chapter's local scholarship fund. To find more information on the scrapbook, visit our alumni website (address listed on front page of newsletter).

## Newsworthy Events and Achievements

---

### Expecting

Christina and PJ Howard are expecting their first baby in July  
Wanda and Dave Berk are expecting in August

### New Arrivals

Janelle and Rick Mead, a boy- Jonathan James- December 23, 2003

### Emeralds

Welcome to the new Active Chapter Membership Class!  
Amber Cox, Erin McKinnis, and Kyle Anderson



## Newsletters

---



We are beginning to compile submissions for the next edition of our newsletter. Please send your ideas, notes, little diddies or pictures to Elizabeth Carleton Kline by email to [ekline@rcn.com](mailto:ekline@rcn.com) or via snail mail to 123 Horsepound Road, Carmel, NY 10512.



Sigma Alpha Alumni of Ohio  
Elizabeth A. Kline  
123 Horsepound Road  
Carmel, NY 10512